

Free Download PDF & VCE Format Microsoft 70-487 Dumps With New Changed Questions from Braindump2go (81-90)

MICROSOFT OFFICIAL: New Updated 70-487 Exam Questions from Braindump2go 70-487 pdf dumps and 70-487 vce dumps!
Welcome to download the newest Braindump2go 70-487 vce&pdf dumps: <http://www.braindump2go.com/70-487.html> (122 Q&As)
2015 New Updated 70-487 Exam Dumps Questions and Answers are all from Microsoft Official Exam Center! Some new questions added into this new released 70-487 Dumps! Download 70-487 Exam Dumps Full Version Now and Pass one time! Exam Code: 70-487Exam Name: Developing Windows Azure and Web ServicesCertification Provider: MicrosoftCorresponding Certifications: MCSD, MCSD: Web ApplicationsKeywords: 70-487 Exam Dumps,70-487 Practice Tests,70-487 Practice Exams,70-487 Exam Questions,70-487 PDF,70-487 VCE, 70-487 Book,70-487 E-Book,70-487 Study Guide,70-487 Braindump,70-487 Prep Guide, 70-487 Dumps PDF, 70-487 Microsoft Developing Windows Azure and Web Services PDF



Questions and Answers : 122
Q&As

Updated: Sep 03, 2015

~~\$129.99~~ **\$99.99**

QUESTION 81Drag and Drop QuestionYou are developing an ASP.NET Web API for a home inventory management system.You need to limit access to users with IP addresses based only in the United States.You have the following code:

```
public class HomeInventoryAuthorization : AuthorizeAttribute
{
    public override void OnAuthorization (HttpRequest request)
    {
        var ipAddress = request.HttpContext.Request.RemoteIpAddress;
    }
}
```

Which code segments should you include in Target 1 and Target 2 to complete the code? (To answer, drag the appropriate code segments to the correct targets in the answer area. Each code segment may be used once, more than once, or not at all. You may need to drag the split bar between panes or scroll to view content.)

Code Segments	Answer Area
<input type="checkbox"/> HttpContext	Target 1: <input type="text" value="Code Segment"/>
<input type="checkbox"/> AuthorizeAttribute	Target 2: <input type="text" value="Code Segment"/>
<input type="checkbox"/> AuthorizationFilterAttribute	
<input type="checkbox"/> CountryContext	

Answer:



QUESTION 82 Drag and Drop Question You are developing an Internet-based ASP.NET Web API application that manages pet data. You install an SSL certificate on the web server to encrypt calls to the API. You create a class named PetAuthorization, which inherits from a type named AuthorizeAttribute, and implements the OnAuthorization() method. You need to implement basic authentication for the API. What should you do? (To answer, drag the appropriate words to the correct targets in the answer area. Words may be used once, more than once, or not at all. You may need to drag the split bar between panes or scroll to view content)



Answer:



QUESTION 83 You are developing an ASP.NET MVC application. The application is an order processing system that uses the ADO.NET Entity Framework against a SQL Server database. It has a controller that loads a page that displays customers. Customers are filtered on Country and, if provided, on CompanyName. You have an Entity Framework context named db. The Customer class is shown below

```
public partial class Customer
{
    ...
    public string CustomerID { get; set; }
    public string ContactName { get; set; }
    public string Country { get; set; }
    ...
}
```

You need to execute a single deferred query to return the filtered list of customers. Which code segment should you use?

```

    OA public ActionResult Index(string country, string CompanyName)
    {
        IEnumerable<Customer> customers;
        IQueryable<Customer> query = db.Customers.Where(c => c.Country == country);
        if (!string.IsNullOrEmpty(CompanyName))
        {
            customers = query.Where(c => c.CompanyName.ToLower().StartsWith(CompanyName.ToLower()));
        }
        return View(customers);
    }

    OB public ActionResult Index(string country, string CompanyName)
    {
        IEnumerable<Customer> customers;
        IQueryable<Customer> query = db.Customers.Where(c => c.Country == country);
        if (!string.IsNullOrEmpty(CompanyName))
        {
            customers = query.Where(c => c.CompanyName.ToLower().StartsWith(CompanyName.ToLower()));
        }
        return View(customers);
    }

    OC public ActionResult Index(string country, string CompanyName)
    {
        IEnumerable<Customer> customers;
        IQueryable<Customer> query = db.Customers.Where(c => c.Country == country);
        query.Load();
        if (!string.IsNullOrEmpty(CompanyName))
        {
            customers = query.Where(c => c.CompanyName.ToLower().StartsWith(CompanyName.ToLower()));
        }
        return View(customers);
    }

    OD public ActionResult Index(string country, string CompanyName)
    {
        IEnumerable<Customer> customers;
        IQueryable<Customer> query = db.Customers;
        query.Load();
        query = query.Where(c => c.Country == country);
        if (!string.IsNullOrEmpty(CompanyName))
        {
            customers = query.Where(c => c.CompanyName.ToLower().StartsWith(CompanyName.ToLower()));
        }
        return View(customers);
    }
    
```

A. Option AB. Option BC. Option CD. Option D Answer: C QUESTION 84 Drag and Drop Question You are developing a self-hosted WCF service to display data about books. The solution contains a service named BookService that implements the IBookService interface. You need to expose the metadata in the service host programmatically. You have the following code:

```

static void Main(s
{
    Target 1 host =
        typeof(BookSer
        host.AddServiceE
        typeof(IBook
        Target 3 behav
        behavior.HttpG
        host.Descripti
        host.Open();
        ...
        host.Close();
}
    
```

Which code segments should you include in Target 1, Target 2, Target 3, Target 4 and Target 5 to build the service host? (To answer, drag the appropriate code segments to the correct targets in the answer area. Each code segment may be used once, more than once, or not at all. You may need to drag the split bar between panes or scroll to view content.)

Code Segments	Answer Area
true	Target 1: Code Segme
false	Target 2: Code Segme
ClientViaBehavior	Target 4: Code Segme
ServiceHost	Target 5: Code Segme

Answer:

Code Segments	Answer Area
true	Target 1: ServiceHost
false	Target 2: ServiceHost
ClientViaBehavior	Target 4: ServiceMetadataBehavior
ServiceHost	Target 5: true

QUESTION 85 You are developing an ASP.NET MVC application. The application is a loan processing system that uses the ADO.NET Entity Framework against a SQL Server database. It has a controller that loads a page that displays all loans along with rate information. Lazy loading has been disabled. The Loan class is shown below.

```

public partial class Loan
{
    ...
    public virtual Rate Rate { get; set; }
}
    
```

You need to return the loans and rate information in a single round trip to the database. Which code segment should you use? A B C D

```
public ActionResult  
{  
    IQueryable<T>  
    return View()  
}  
  
public ActionResult  
{  
    IQueryable<T>  
    loans = loan  
    return View()  
}  
  
public ActionResult  
{  
    IQueryable<T>  
    return View()  
}  
  
public ActionResult  
{  
    IQueryable<T>  
    loans.Select  
    return View()  
}
```

A. Option AB. Option BC. Option CD. Option D Answer: C QUESTION 86 You are developing a library management application that uses the ADO.NET Entity Framework against a SQL Server database. The application has a method that returns check outs filtered by date. The Book class is shown below

```
public partial class Book  
{  
    ...  
}
```

You must filter the data on the SQL server before it is returned to the application server. You need to return books checked out more recently than the entered date. Which code segment should you use? A B C D

```
IQueryable<Book> books = db.Books;  
books = books.Where(b => b.CheckoutDate >= date);  
  
IEnumerable<Book> books = db.Books.ToList().AsQueryable();  
books = books.Where(b => b.CheckoutDate >= date);  
  
IQueryable<Book> books = db.Books.ToList().AsQueryable();  
books = books.Where(b => b.CheckoutDate >= date);  
  
IEnumerable<Book> books = db.Books;  
books = books.Where(b => b.CheckoutDate >= date);
```

A. Option AB. Option BC. Option CD. Option D Answer: A Explanation: The difference is that IQueryable<T> is the interface that allows LINQ-to-SQL (LINQ.-to- anything really) to work. So if you further refine your query on an IQueryable<T>, that query will be executed in the database, if possible. For the IEnumerable<T> case, it will be LINQ-to-object, meaning that all objects matching the original query will have to be loaded into memory from the database. QUESTION 87 Hotspot Question You are developing an ASP.NET MVC application. It is ready for deployment to the production web server. A local SQL Express .MDF file was used by the application during development. The deployment has the following requirements: The deployment must merge the assemblies on the local machine with those on the host. The deployment must publish the local database to the remote Microsoft SQL server. You need to configure the web package settings for deployment. Which settings should you use? (To answer, select the appropriate setting or settings in the answer area.)

Package/Publish enables you to deploy your Web application to Web servers.
[Learn more about Package/Publish Web](#)

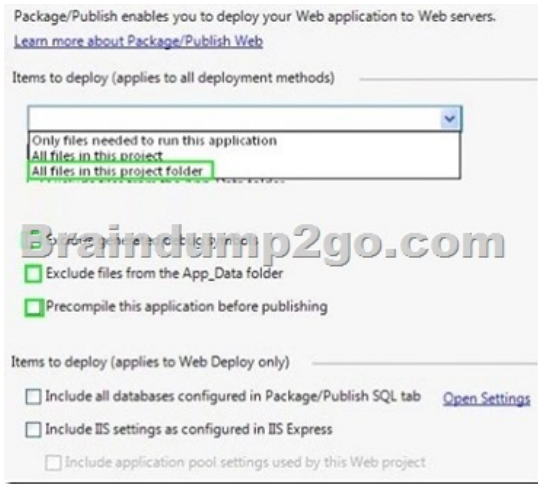
Items to deploy (applies to all deployment methods)

Only files needed to run this application
 All files in this project
 All files in this project folder

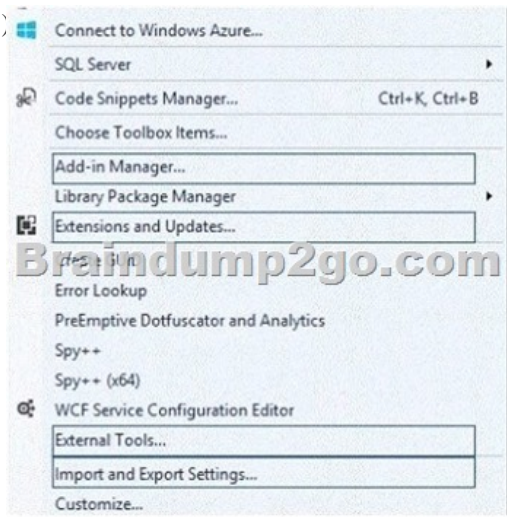
Items to deploy (applies to Web Deploy only)

Include all databases configured in Package/Publish SQL tab [Open Settings](#)
 Include IIS settings as configured in IIS Express
 Include application pool settings used by this Web project

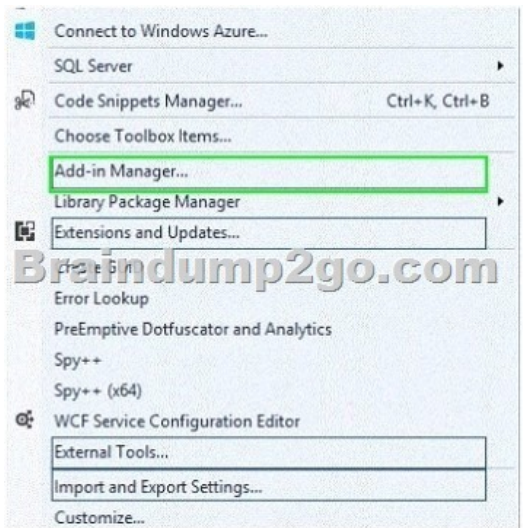
Answer:



QUESTION 88 You are developing a Microsoft Azure web application. The application will be deployed to 10 web role instances. A minimum of 8 running instances is needed to meet scaling requirements. You need to configure the application so that upgrades are performed as quickly as possible, but do not violate scaling requirements. How many upgrade domains should you use? A. 1B. 2C. 5D. 10 Answer: C QUESTION 89 Hotspot Question You are supporting an application that uses the ADO.NET Entity Framework to query and access data. The latest version of a tool will add new templates and wizards that will enhance developer productivity. You need to update the tool. Which Visual Studio 2012 menu item should you choose? (To answer, select the appropriate menu item in the answer area.)



Answer:



QUESTION 90You are developing an ASP.NET MVC application that displays a report. The report includes large images that are stored in a database. Members of the EntityClient namespace are used to access the database through the ADO.NET Entity Framework data model. You need to prevent memory exceptions while generating a report using the EntityDataReader type. Which CommandBehavior type should you use? A. FastForwardReadOnly B. SequentialAccess C. SingleResult D. SingleRow
Answer: B Explanation: SequentialAccess Provides a way for the DataReader to handle rows that contain columns with large binary values. Rather than loading the entire row, SequentialAccess enables the DataReader to load data as a stream. Braindump2go Offers 100% money back guarantee on all products! Our products remain valid for a lifetime! Recently we update our 70-487 Exam Questions since the Microsoft Official Exam Center adds some new questions in 70-487 Exam Dumps. Braindump2go checks all Exam Dumps every day and guarantee all the exam questions are the latest and correct!



**Questions and Answers : 122
Q&As**

Updated: Sep 03, 2015

~~\$129.99~~ **\$99.99**

70-487 PDF Dumps & 70-487 VCE Dumps Full Version Download(122q): <http://www.braindump2go.com/70-487.html>